

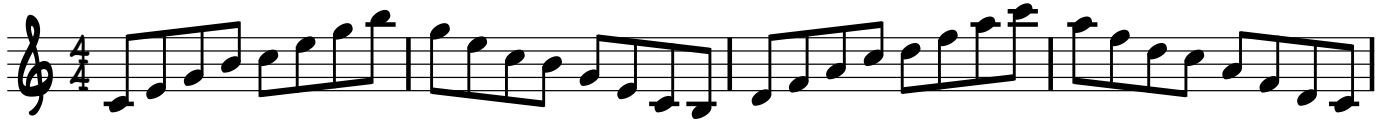
CHORD TONE DIATONIC EXERCISE

SHINICHI FUJII

No.1

CMAJ7

D-7



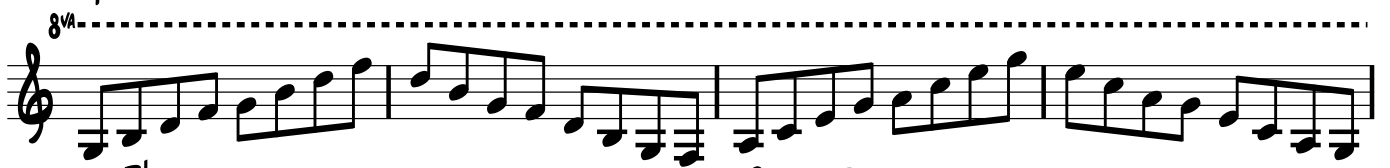
E-7

FMAJ7



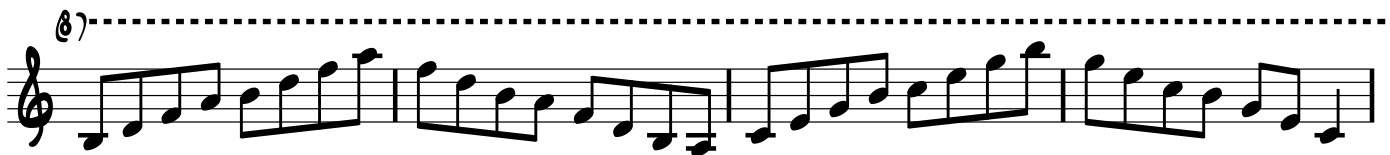
G7

A-7



B-7b5

CMAJ7



No.2

CMAJ7

D-7

E-7

FMAJ7

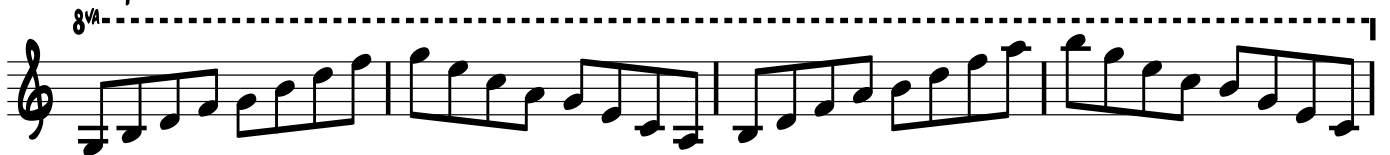


G7

A-7

B-7b5

CMAJ7



No.3

CMAJ7

D-7

E-7

FMAJ7

G7

A-7

B-7b5

CMAJ7



D-7

E-7

FMAJ7

G7

A-7

B-7b5

CMAJ7

